



# okolab

## H601-NIKON-TS2R-GLASS

H601-NIKON-TS2R-GLASS creates a warm and optically transparent surface perfectly flush with Nikon TC-S-SR, TC-S-SRF, TS2-S-SM microscope stages. It provides the highest temperature uniformity by warming up its ITO coated glass.

H601-NIKON-TS2R-GLASS connects to the multipurpose H401-T-CONTROLLER, our user-friendly, dual channel touch screen controller, featuring an immersible temperature sensor, automatic calibration routines and on board memory for data logging.



[oko-lab.com](http://oko-lab.com)

[info@oko-lab.com](mailto:info@oko-lab.com)

Warranty



10 years

Resistant



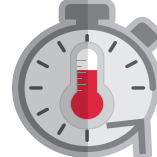
to Impact and Scratch  
Dragontrail™ Glass

Fast



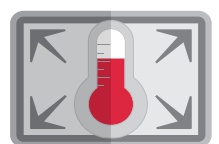
Thermal Response

Stable



Temperature in time

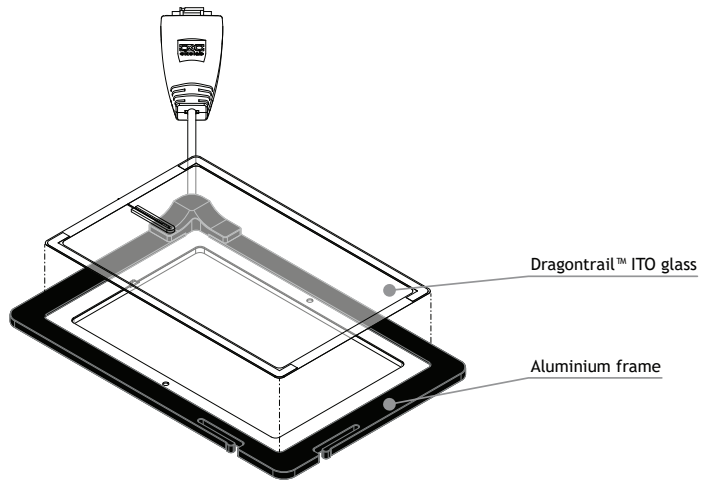
Uniform



Surface Temperature

## PRODUCT DESCRIPTION

H601-NIKON-TS2R-GLASS is made by an optically clear glass mounted into an aluminum rectangular case. The optical glass is coated with conductive ITO (Indium Tin Oxide) and is actively heated by a gentle flux of low voltage current. Temperature accuracy is ensured by the reading of a tiny thermistor in contact with the glass surface. The aluminum case ensures superior resistance and flatness.



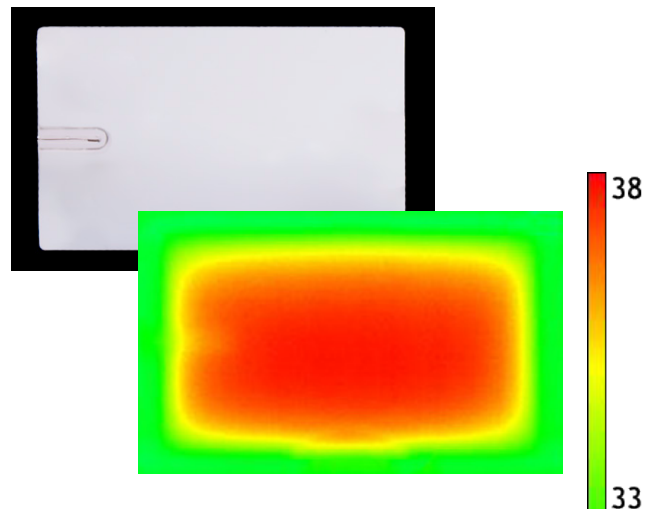
H601-NIKON-TS2R-GLASS must be connected to the user-friendly touch screen H401-T-CONTROLLER. This temperature controller offers two independent control channels, of which one is used for H401-NIKON-TS2R-GLASS and the other one can be used with another heated plate.

H401-T-CONTROLLER is equipped with a flexible, immersible temperature sensor to measure liquid temperature inside the dish. Smart automatic calibration routines allow to calibrate glass temperature in order to achieve the desired temperature inside the dish.

On board memory allows to log and download data and alarm events.

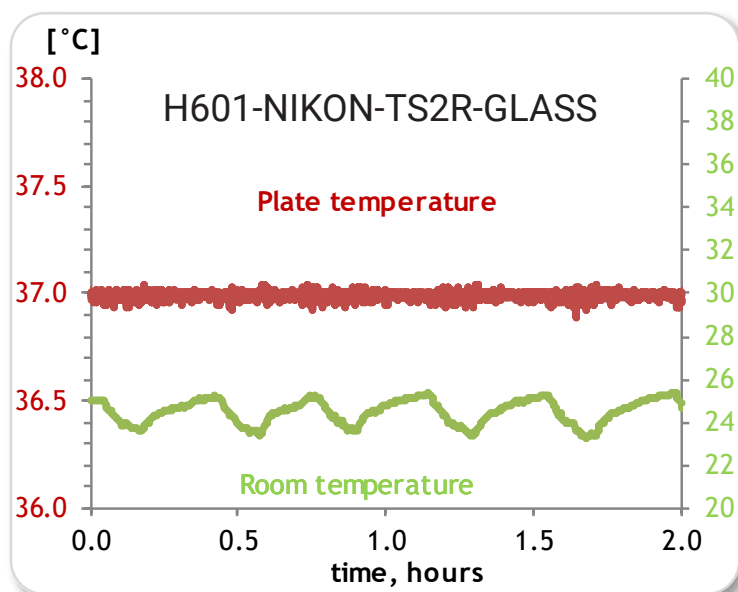
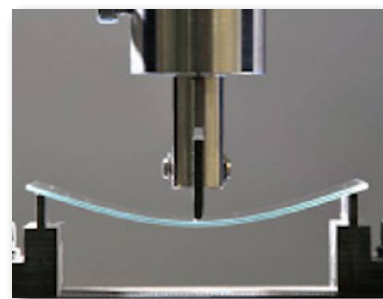
## TEMPERATURE UNIFORMITY

H601-NIKON-TS2R-GLASS achieves the highest temperature uniformity by independently controlling the temperature of the glass. Uniformity of each single device is measured via high accuracy IR imaging.



## SUPERIOR MECHANICAL RESISTANCE

H601-NIKON-TS2R-GLASS features Dragontrail™ glass, which features the highest resistance to breakage and scratches. The glass is firmly cased into the aluminum rectangular frame, which adds mechanical strength to the entire product. A special anti-fingerprint coating helps to keep glass surface clean during imaging, ensuring the best optical quality.



## TEMPERATURE STABILITY

H601-NIKON-TS2R-GLASS provides a temperature stability better than  $\pm 0.1^{\circ}\text{C}$ , regardless of room temperature fluctuations. Advanced control algorithms ensure a fast response to sudden condition changes, such as dish positioning on the glass surface.

## TECHNICAL SPECIFICATIONS

<b>OPERATION MODE</b>	GLASS ONLY MODE AND GLASS + METAL MODE
<b>TEMPERATURE RANGE</b>	FROM $3^{\circ}\text{C}$ ABOVE AMBIENT TO $60^{\circ}\text{C}$
<b>TEMPERATURE ACCURACY ON SAMPLE</b>	$\pm 0.1^{\circ}\text{C}$ AFTER SELF CALIBRATION ROUTINE*
<b>TEMPERATURE STABILITY</b>	$\pm 0.1^{\circ}\text{C}$ IF ROOM TEMPERATURE STAYS WITHIN $\pm 1^{\circ}\text{C}$
<b>TEMPERATURE UNIFORMITY</b>	$\pm 1^{\circ}\text{C}$ OVER THE SURFACE IN GLASS + METAL MODE
<b>FREE SENSOR CALIBRATION MECHANISM</b>	COMPARISON WITH EXTERNAL CERTIFIED THERMOMETER
<b>GLASS PLATE TYPE</b>	DRAGONTRAIL™ STRENGTHENED ITO GLASS
<b>GLASS THICKNESS</b>	0.5 MM
<b>COMPATIBLE WITH</b>	NIKON HEATED STAGE TOP HEATER
<b>OBSERVATION AREA</b>	70 X 70 MM <sup>2</sup>
<b>DIMENSIONS</b>	$\varnothing$ 108 MM
<b>WEIGHT</b>	60 G
<b>POWER CONSUMPTION MAX</b>	70 W

\* AVAILABLE ON H401-T-CONTROLLER

NOTE: FOR ANY INFORMATION ABOUT H401 HEATING DEVICES, PLEASE VISIT [WWW.OKO-LAB.COM](http://WWW.OKO-LAB.COM)

